



BPH22



BPH52

Manual pumps for oil and grease

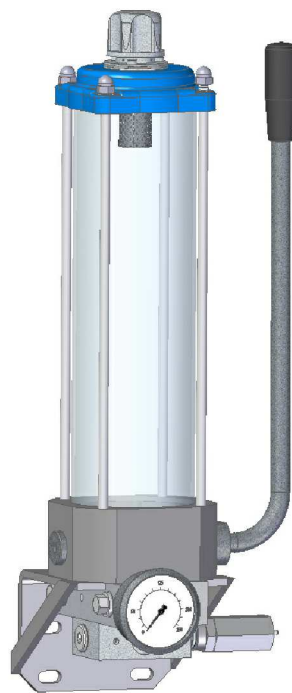
One line System



BPH27



BPH57

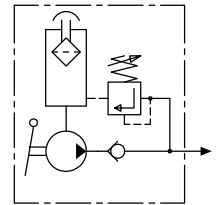


Manual pump for OIL

BPH22/B

216.220.000

- One line system
- 0,5 and 1,5 litres tank
- Max. pressure 160 bar
- With refilling plug and filter
- Transparent methacrylate reservoir

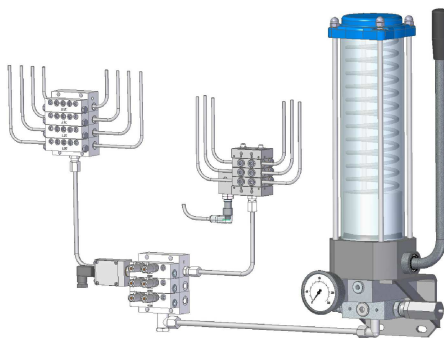


Application

As a doser pump, preferably for the feeding of hydraulic systems and centralized greasing installations with progressive distributors.

Technical data

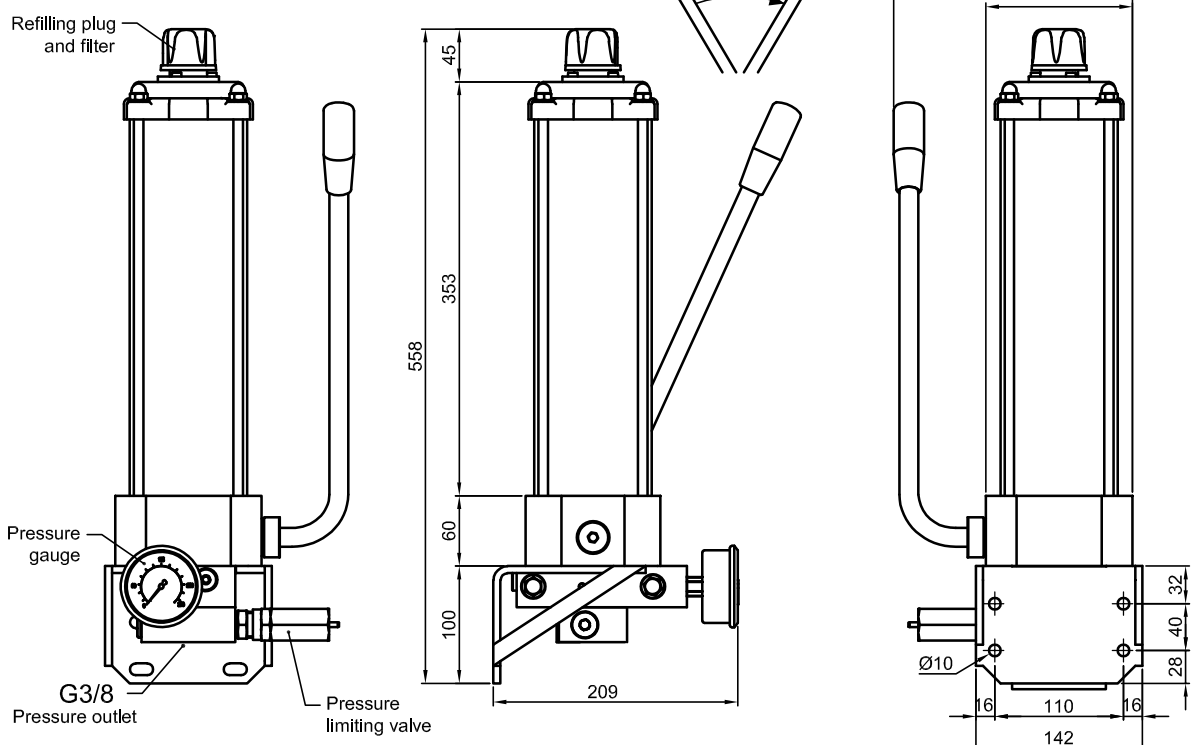
Working max. pressure.....160 bar
Pressure limiting valve..... adjustable 40 ÷ 250 bar
Tank capacity..... 0,5-1,5 litres
Flow rate..... 3 cm³/cycle
Pressure gauge..... 0-250 bar
Lubricant..... mineral and synthetic oils
Working temperature..... -10°C ÷ +60°C



BPH22 / B-1 / X 1 - 0 0 - A 2 X

Tank capacity	X
0,5 kg	1
1,5 kg	2

Pressure gauge	X
Without	0
With	5



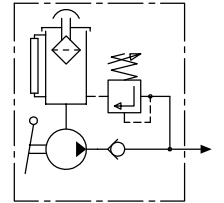


Manual pump for OIL

BPH52/A

216.520.000

- One line system
- 5 litres tank
- Max. pressure 160 bar
- With refilling plug and filter
- Steel tank and cover
- Visual level

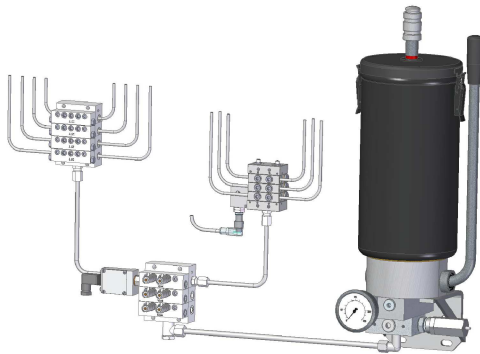


Application

As a doser pump, preferably for the feeding of hydraulic systems and centralized greasing installations with progressive distributors.

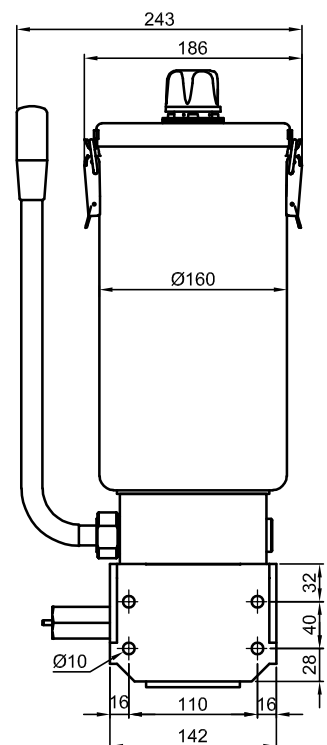
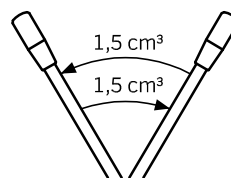
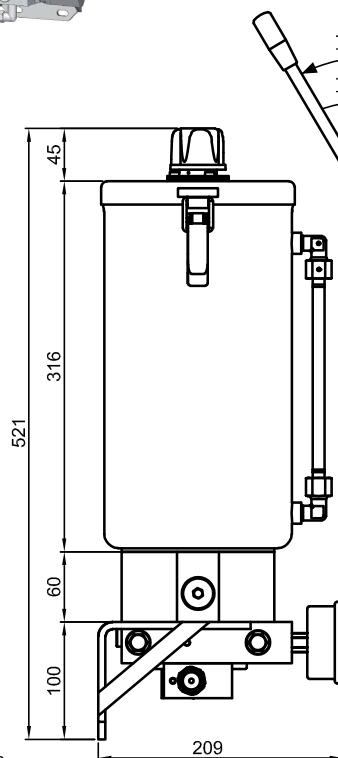
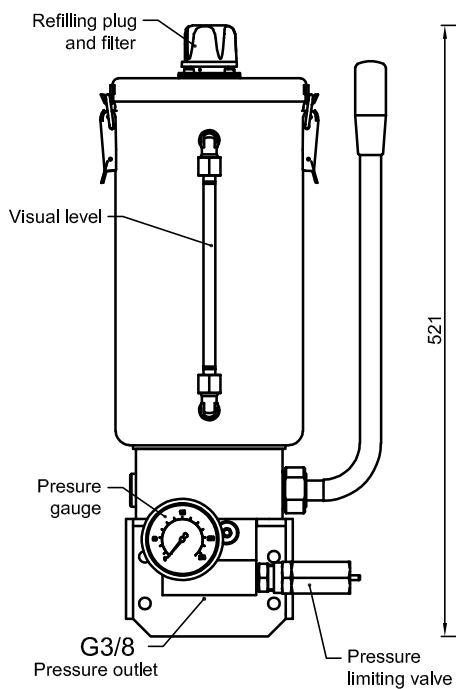
Technical data

Working max. pressure.....160 bar
 Pressure limiting valve..... adjustable 40 ÷ 250 bar
 Tank capacity..... 0,5-1,5 litres
 Flow rate..... 3 cm³/cycle
 Pressure gauge.....0-250 bar
 Lubricant.....mineral and synthetic oils
 Working temperature..... -10°C ÷ +60°C
 Tank material..... DD14 steel painted by cataphoresis



BPH52 / A-1 / 5 1 - 0 0 - A 2 X

Pressure gauge	X
Without	0
With	5



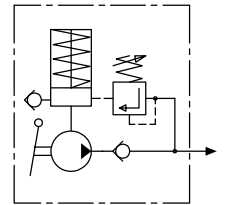


Manual pump for GREASE

BPH27/B

216.260.000

- One line system
- 0,5 and 1,5 kg tank
- Max. pressure 160 bar
- Pressurized tank by piston with spring
- Transparent methacrylate reservoir
- Quick nipple for refilling

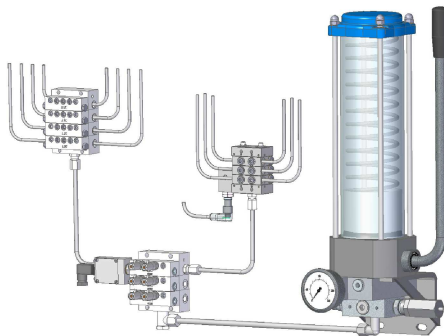


Application

As a doser pump, preferably for the feeding of hydraulic systems and centralized greasing installations with progressive distributors.

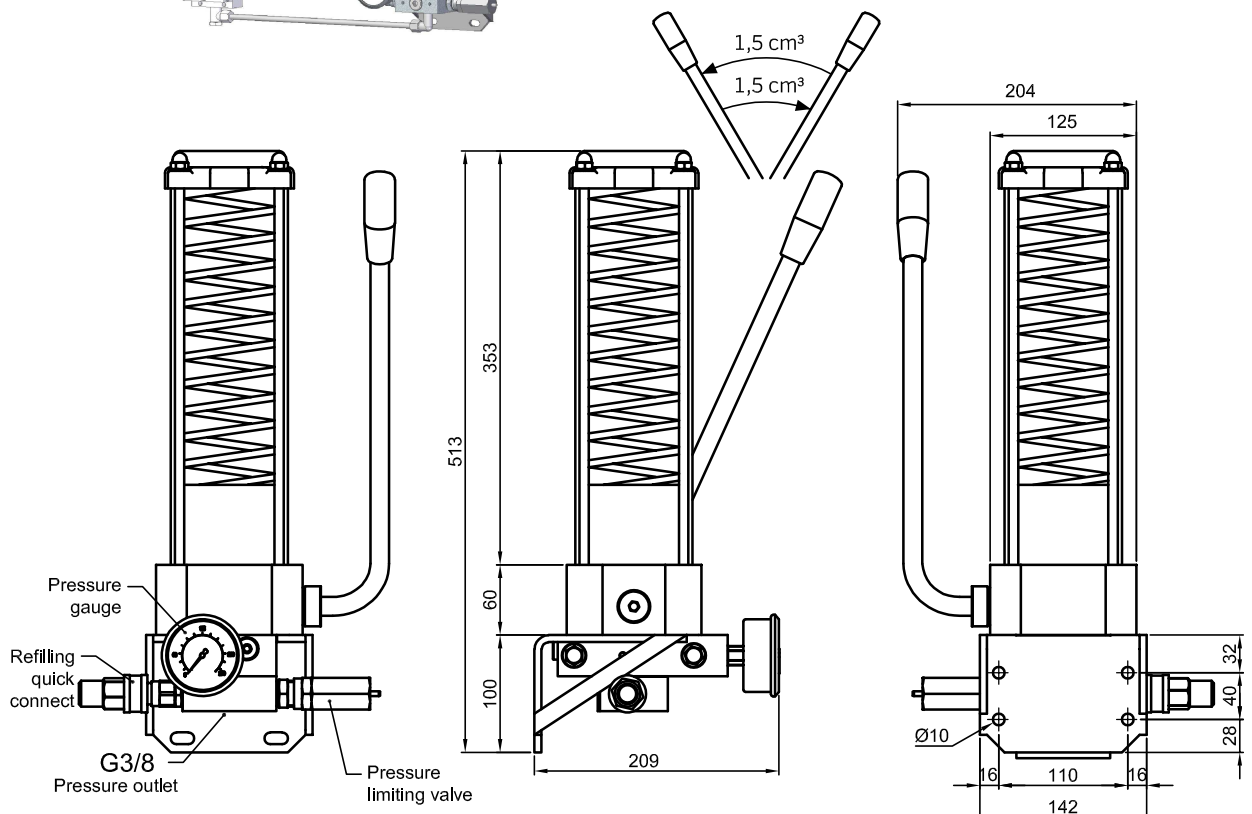
Technical data

Working max. pressure.....160 bar
Pressure limiting valve..... adjustable 40 ÷ 250 bar
Tank capacity.....0,5-1,5 kg
Flow rate.....3 cm³/cycle
Pressure gauge.....0-250 bar
Lubricant..... Grease (up to NLGI2)
Working temperature..... -10°C ÷ +60°C



BPH27 / B-1 / X X - 0 0 - A 2 X

Tank capacity	X	Tank refilling	X	Pressure gauge	X
0,5 kg	1	Nipple	2	Without	0
1,5 kg	2	Quick connect	3	With	5



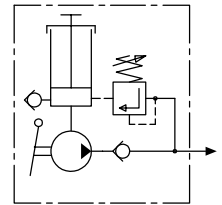


Manual pump for GREASE

BPH57/A

216.560.000

- One line system
- 5 kg tank
- Max. pressure 160 bar
- Pressurized tank by follower piston
- Steel tank and cover
- Quick connect for refilling

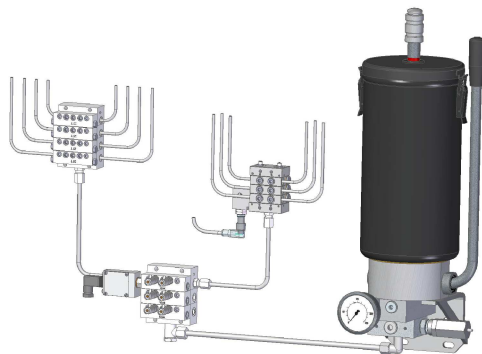


Application

As a doser pump, preferably for the feeding of hydraulic systems and centralized greasing installations with progressive distributors.

Características técnicas

Working max. pressure.....160 bar
Pressure limiting valve..... adjustable 40 ÷ 250 bar
Tank capacity..... 5 kg
Flow rate..... 3 cm³/cycle
Pressure gauge.....0-250 bar
Lubricant..... Grease (up to NLGI2)
Working temperature..... -10°C ÷ +60°C
Tank material..... DD14 steel painted by cataphoresis



BPH57 / A-1 / 5 X - 0 0 - A 2 X

Tank refilling	X
Nipple	2
Quick connect	3

Pressure gauge	X
Without	0
With	5

There is a push valve at the upper of the rod which allows a easy removal of the pusher piston.

Also, a notch allows a constant visual monitoring of lubricant level.

